

REHABILITATION AND BIODIVERSITY IN EXTRACTION SITES



GROUP GUIDELINES
December 2022

REHABILITATION AND BIODIVERSITY

The first step in cement and aggregates production – the extraction of raw materials from the earth’s crust – inevitably has an impact on the surrounding natural and social environment. In particular, the removal of soil and changes in topography of the area are likely to affect local ecosystems and watersheds. Minimizing environmental impact is therefore a fundamental priority for our Group to be able to have sustainable operation.

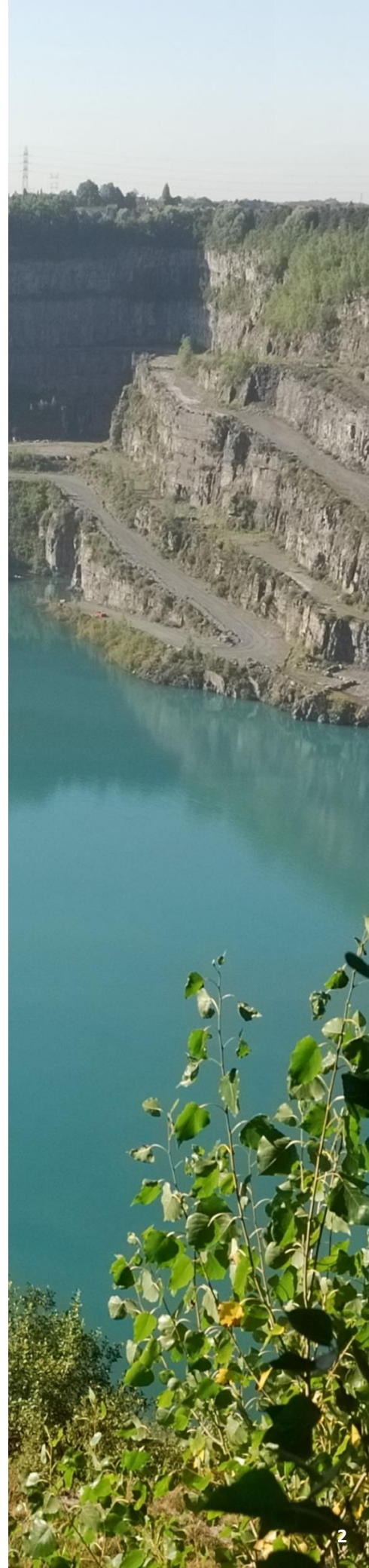
Impacts can be successfully addressed and mitigated through the development and implementation of an effective quarry Rehabilitation Plan and Biodiversity Management Plan, especially in areas of high biodiversity.

Cementir Group issued a **Group Guideline** in 2022, to provide guidance to develop and implement biodiversity and rehabilitation plans at the quarry/pit sites to:

- standardize and improve the process of quarry rehabilitation and biodiversity management across Cementir Group through planning, implementation and sharing of the practices both in existing and new sites;
- ensure common understanding and consistent reporting of KPIs on biodiversity and quarry rehabilitation in line with cement and aggregate industry and by doing so, monitoring the performance of our rehabilitation and biodiversity commitments and supporting transparent communication with our stakeholders;
- leave the sites safe and stable for future use of the land, and which may or may not be related to the values of biodiversity;
- identifying biodiversity sensitive sites and having whole life plan and strategies to avoid or minimize the impacts and even to restore and enhance the biodiversity value.

The rules and indicators, defined in the Guideline set to be essential for implementation and actual status review is the first step for an effective application of the contents here formalized.

Following the status review, group commitments and performance monitoring on rehabilitation and biodiversity will continue to be communicated as an integral part of Group Sustainability Report.



PRINCIPLES AND RULES

Compliance to all applicable law and regulations and to meet all regulatory requirements at minimum for rehabilitation and biodiversity management at all extraction sites is mandatory.

Rehabilitation Plan (RP) shall be in place and executed at all extraction sites reflecting the legislative requirements at highest priority and then by encompassing environmental (including biodiversity) and safety /site stability considerations even in the case of not having legislative requirements.

Biodiversity Management Plan (BMP) shall be in place for the sites that are sensitive to biodiversity and having high biodiversity value. A BMP is complementary and should dovetail with the RP. Some sites will require a standard RP where biodiversity can be assessed with a section in it while some sites that are richer in biodiversity will require a comprehensive BMP.

Mitigation hierarchy should be followed where possible and opportunities for enhancing biodiversity should be promoted and applied in BMP.

Stakeholders' involvement should be enhanced at all stages of RP and BMP. The long-term sustainability of the RP and the BMP should be ensured through appropriate partnerships, resourcing, and engagement of stakeholders.

Long term perspective impacts, risks, and liabilities as well as **opportunities** should be assessed also considering post-closure land use possibilities even if this can evolve over the lifetime of the quarry. Realistic financial provisions for total quarry lifetime for RP and BMP must be studied and should periodically be updated over time also considering actualizations.

Monitoring plan is integral part of the RP and BMP, thereby ensuring the documentation and measurement of progress and performance against the objectives is required. Based on the results of the monitoring plan, appropriate corrective measures are taken where necessary, under a revision process of the RP and BMP.



Cementir Holding N.V.

Registered office: 36, Zuidplein, 1077 XV – Amsterdam, The Netherlands
Telephone: +31 (0) 20 799 7619

Secondary and operational office: Corso di Francia 200, 00191 – Rome, Italy
Telephone: +39 06 324931

Share capital: 159,120,000 Euro

VAT Number: 02158501003

Tax number: 00725950638

Netherlands Chamber of Commerce number 76026728

Website: www.cementirholding.com



cementirholding

CALTAGIRONE GROUP